

**RESILIENCE BRIEF**

Co-designing Cities for the Future  
Stefanie M. Falconi | Manuela Powidayko  
Alberici Souza | Marina Corona Cosmo  
17.11.2020

# CO-DESIGNING CITIES FOR THE FUTURE

2  
0  
2  
0



**INSTITUTO LIMITE**  
science policy education



**INSTITUTO LIMITE**  
science policy education

**Instituto Limite**  
Building strategies to respond to Climate Change

## Our Mission

To provide the data and tools necessary to make decisions under uncertainty. Provide strategic intelligence to drive long-term incentives and investments for more adaptable and resilient institutions.

## Our Team

Stefanie M. Falconi, Ph.D.  
Gonzalo L. Pita, Ph.D.  
Manuela Powidayko Alberici Souza, M.S.  
Marina Corona Cosmo, B.Arch.

You can learn more and get in touch with us at [www.institutolimite.com](http://www.institutolimite.com) or via the QR Code.



## INNOVATION WEEK 2020

### (RE)IMAGINING AND BUILDING FUTURES

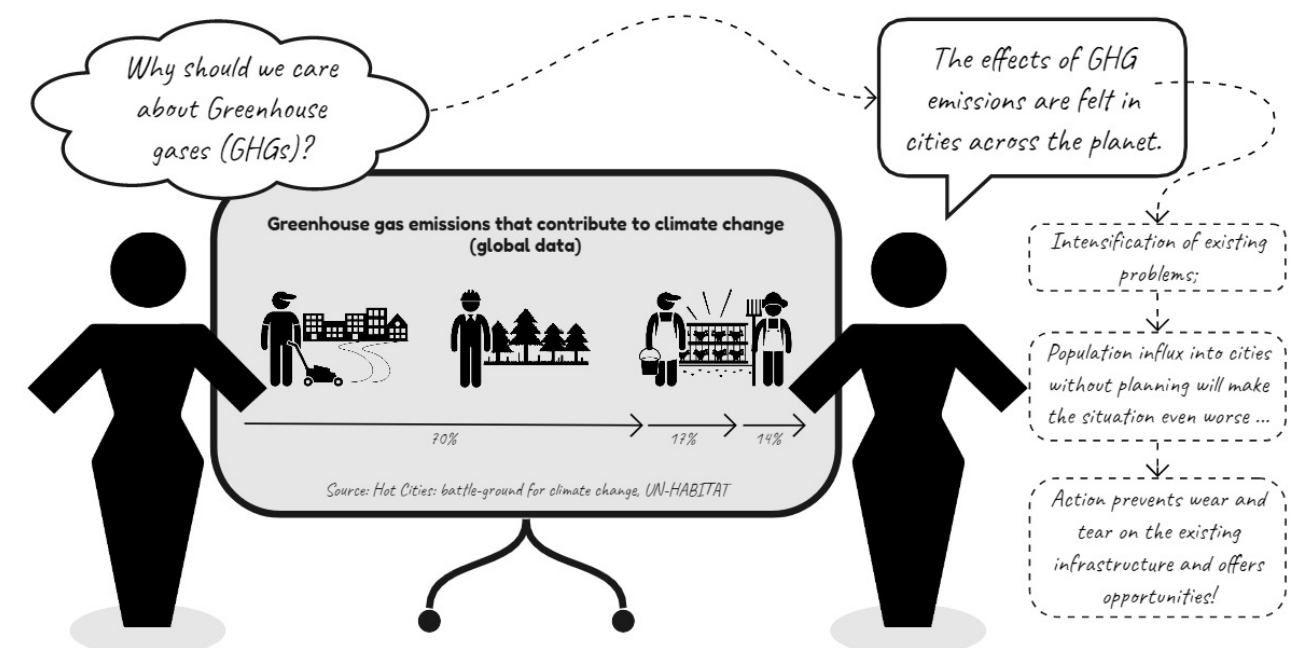
The *Co-designing cities for the future* workshop was part of the Innovation Week 2020, the 6th edition of the biggest government innovation event in Latin America. The program was organized by ENAP and was part of the OECD virtual forum #GovAfterShock. It proposed to answer the challenge: **what new futures do we want to build?**

To learn more, visit the websites [gov-after-shock.oecd-opsi.org](http://gov-after-shock.oecd-opsi.org) and [semanadeinovacao.enap.gov.br](http://semanadeinovacao.enap.gov.br)

# CO-DESIGNING CITIES FOR THE FUTURE

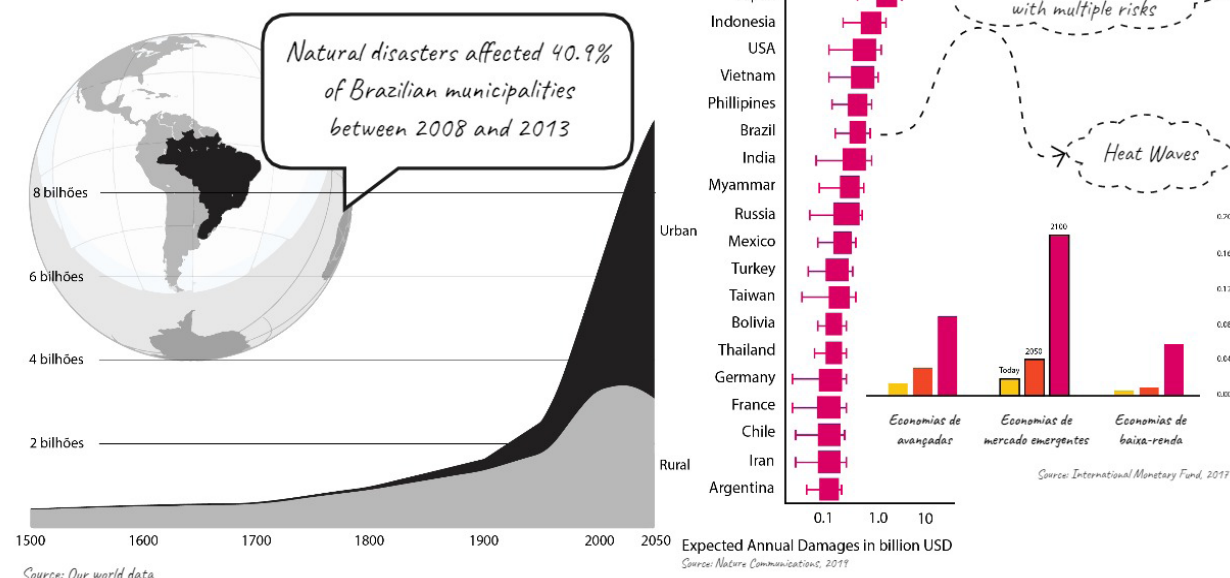
Cities contribute with 70% of greenhouse gas emissions. They are also at the forefront of the fight against climate change and its impacts on the physical and social infrastructure, economy, and public health. By 2050, over 75% of the world's population is expected to live in cities and green spaces become crucial in battling climate change while building social cohesion.

Through a participatory approach, participants of this workshop will co-design prototypes to re-imagine cities post-pandemic through the lens of their social capital as a way to keep cities safe, cooler, and more resilient to shocks. Our aim is to reinvent community spaces as a gateway to climate-resilient cities.



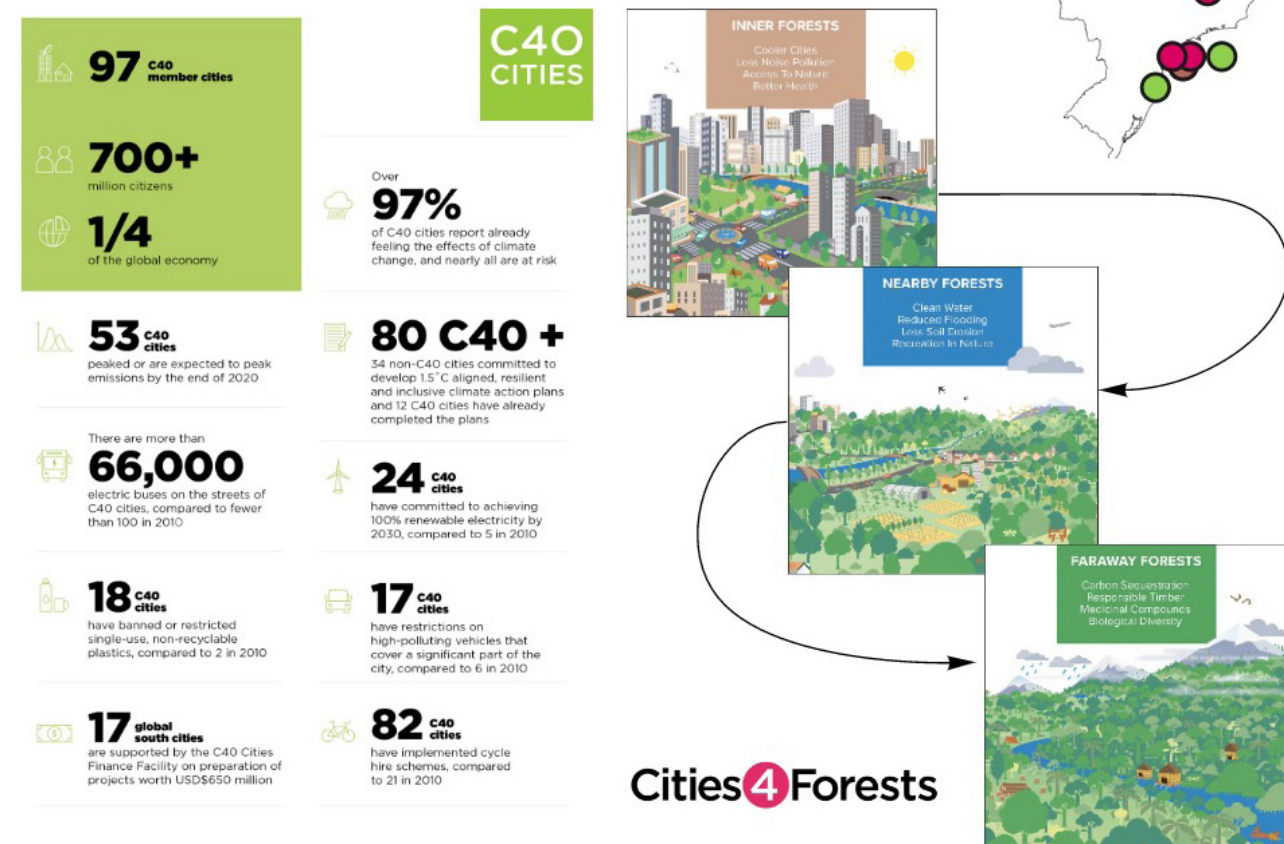


## Brazil's Vulnerabilities



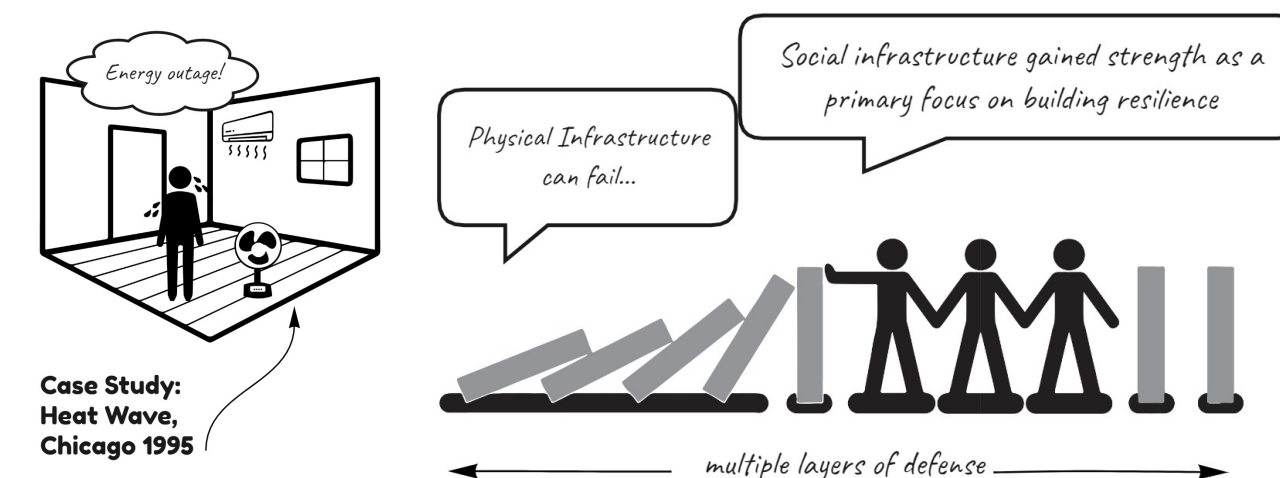
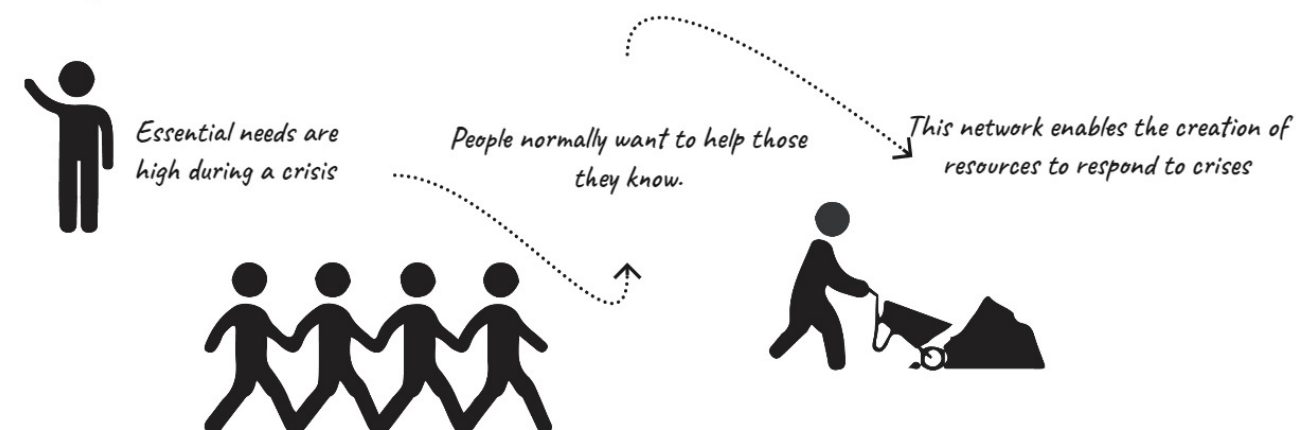
## Cities = opportunities

"Cities provide a path for creativity, connect human capital and when well governed, drive growth."

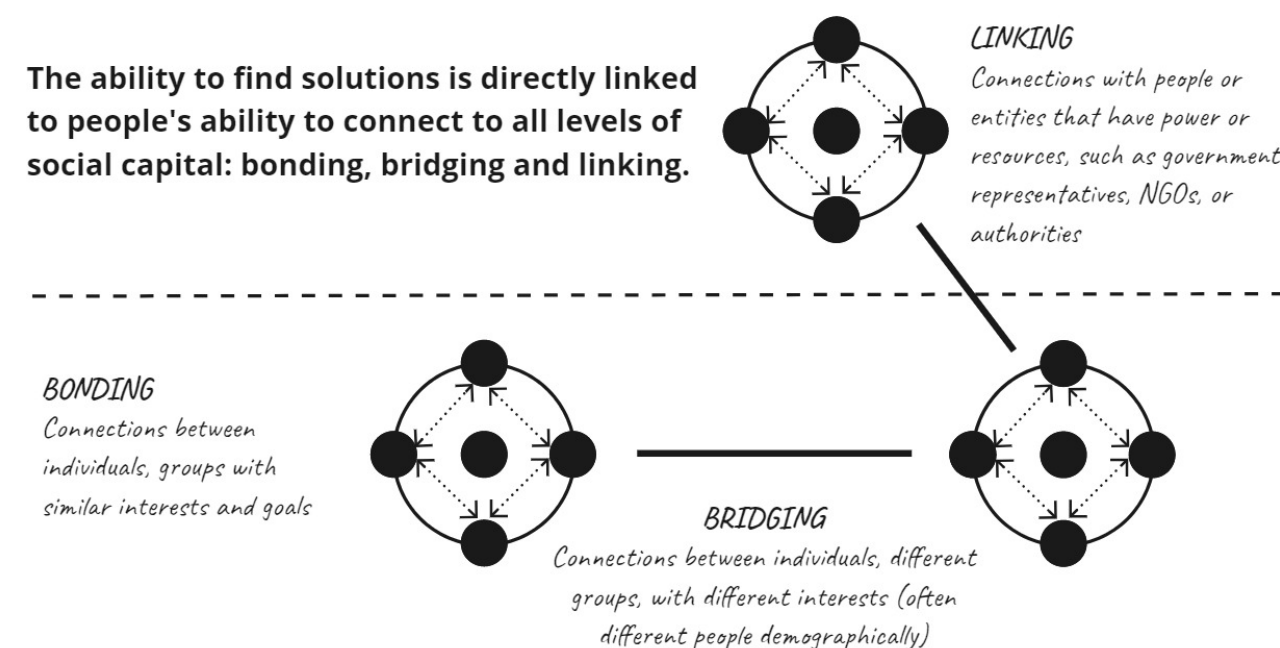


## Social Capital

Communities with a high level of social capital are more resilient, as they have the ability to connect to create, access, and distribute resources.



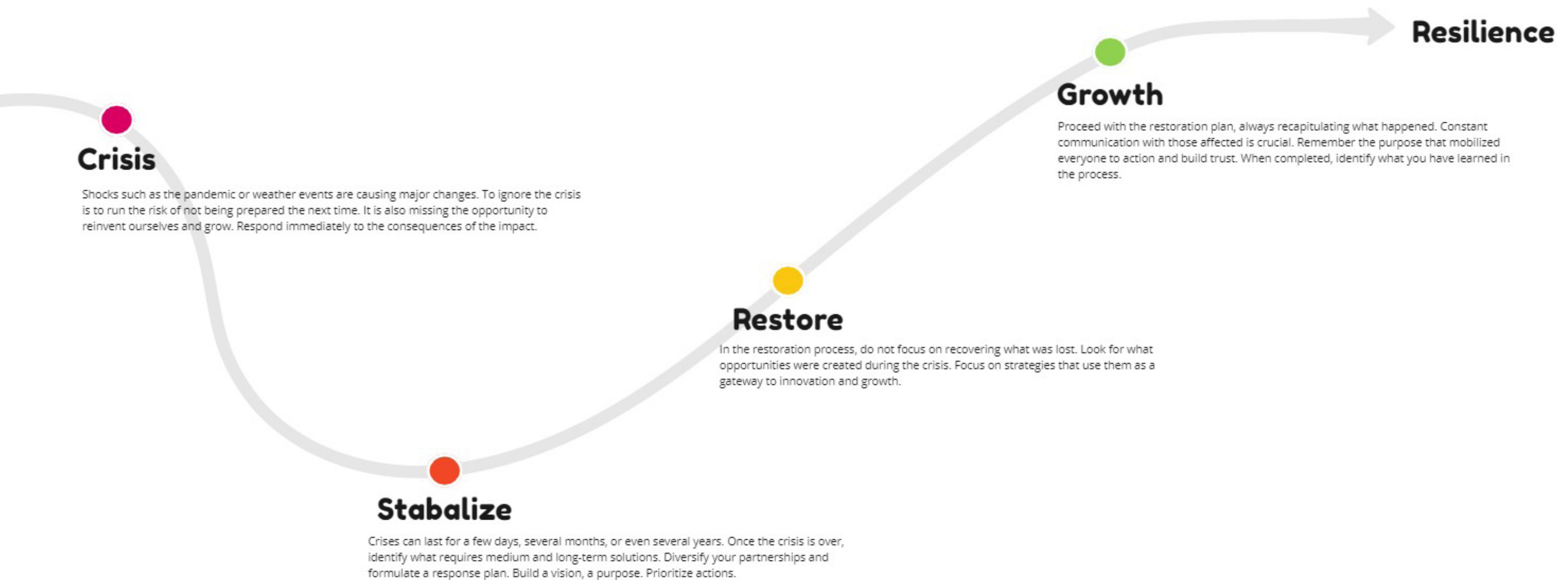
The ability to find solutions is directly linked to people's ability to connect to all levels of social capital: bonding, bridging and linking.



Source: Aldrich, 2012



# RESILIENCE AND PROCESS TO RESPOND TO IMPACTS



## RESULTS | ACTIVITY #1A

What was the impact of the pandemic in the Social Capital of cities

### PART A

*How has the pandemic affected our ability to interact?*



#### What we want to live behind

Falta de visão do coletivo	Aglomerações em busca de atendimento nos serviços públicos	Serviços presenciais, com grande tempo de deslocamento	Limitações nos horários de atendimento ao público	Visão individualista de como lidar com crises
Falta de interação presencial entre os colegas de trabalho	Predominância das relações virtuais.	Reuniões presenciais como padrão no trabalho	Falta de espaços verdes e coletivos ao ar livre.	

#### What do we want to keep

Valorização da interação social ao ar livre (contato com a natureza)	A distância que foi diminuída por meio das ferramentas de interação virtual	Consciência	Novo alcance na oferta de serviços/capacitação além do espaço geográfico onde ele é realizado.	Maior disponibilidade que facilita acesso a informações.
Mobilização para apoiar as pessoas vulneráveis	Nos deixou mais abertos a novos formatos de interação e espaços que os facilitão	Novas perspectivas de interação remota/online (realidade virtual)	Aprimoramento das plataformas de interação online (e.g., serviços públicos)	

## RESULTS | ACTIVITY #1B

What was the impact of the pandemic in the Social Capital of cities

### PART B

*How did the urban fabric contribute to these changes?*



#### What we want to live behind

Falta de espaços abertos e com infraestrutura para prática de atividades físicas ou reuniões ao ar livre	Congestionamentos	Carência de áreas verdes nas cidades	Lixões a céu aberto.	Pouco uso das formas coletivas de transporte.
Baixa qualidade dos espaços públicos	Superlotação e trajetos longos.			

#### What do we want to keep

Organização do espaço das cidades de maneira mais racional.	A capacidade de espaços se adequarem a exigências e normas que prezam por segurança	Maior interação entre vizinhos	Grupos de leitura e interpretação de peças de teatro e a exibição de peças online.	Ambientes e espaços urbanos interativos, abertos
Uso de bicicletas e caminhadas para evitar o uso de transporte motorizado	Sessão de filmes com posterior grupos de discussão.			



## BEFORE | ACTIVITY #2

What do we want to do differently so that our cities are more resilient to disasters?



**Scenario 1:** Very dense urban network, closed condominium and large avenue with heavy traffic. Mixed uses, industries, businesses and homes. This neighborhood has been showing a high number of deaths during the summer months each year, due to the effect of heat waves that cause heat islands. The population has also been showing a high number of respiratory diseases, such as asthma.

**BEFORE**



## AFTER | ACTIVITY #2

What do we want to do differently so that our cities are more resilient to disasters?



Proposed changes for scenario 1 designed by the participants during the workshop.

**AFTER**